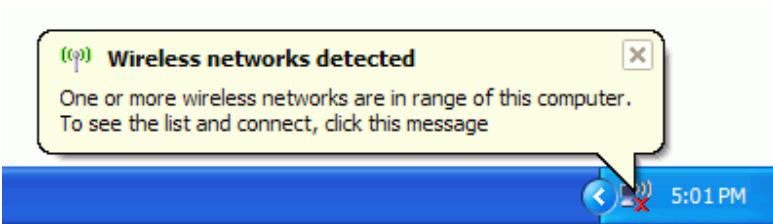
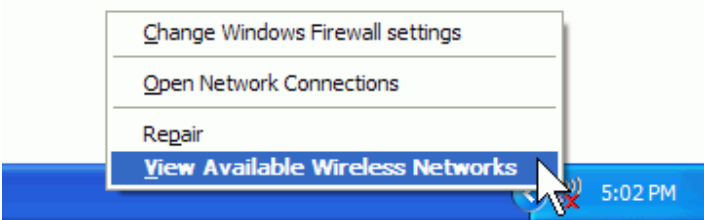


To connect your computer to a wireless network

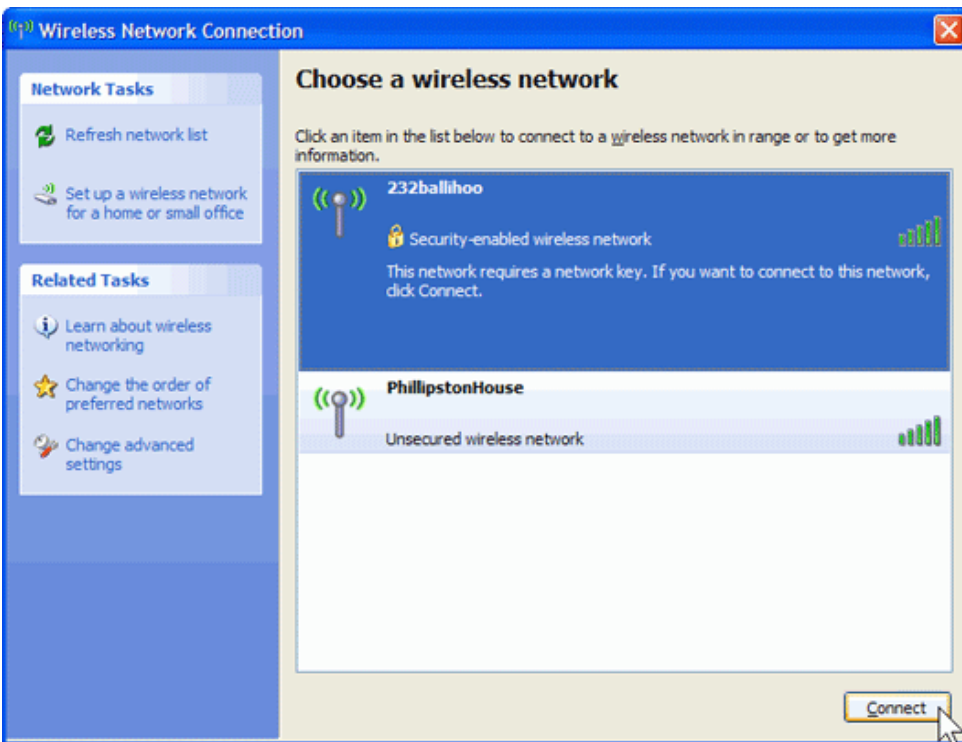


1. Right-click the wireless network icon in the lower right corner of your screen, and then click on **View Available Wireless Networks**

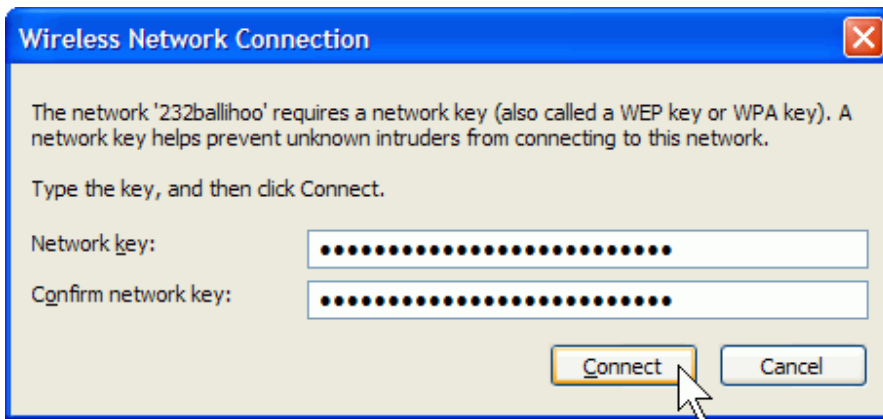


Note: If you run into problems, consult the documentation that came with your network adapter.

2. The Wireless Network Connection window appears and displays any available wireless networks within range of your computer. If you don't see a specific network you expect, click Refresh network list in the upper left corner. Click your selected network, then click Connect in the lower right corner



3. If a security key is required, Windows XP prompts you to enter it. Type the encryption key that you were given in both the Network key and Confirm network key boxes, and then click Connect. The VSF Clubhouse wireless connection does not currently require a key.



4. Windows XP will show its progress as it connects to your network. If the Wireless Network Connection window continues to show Acquiring Network Address, you may have mistyped the encryption key—click Cancel and return to step 3.
5. After you're connected, you can close the **Wireless Network Connection** window. Now you're ready to browse the Web wirelessly
6. If your computer does not have wireless network support built in, you can install a wired or a wireless network adapter. Windows XP will automatically detect the new adapter and might prompt you to insert the CD that came with it. The on-screen instructions will guide you through the configuration process.

Windows XP Service Pack 2 (SP2) is not required for wireless networking, but it does make setting one up much easier. SP2 also helps protect you against viruses, worms, and other Internet intruders. To install SP2, visit Microsoft Update. The steps below apply only if you're using SP2.